

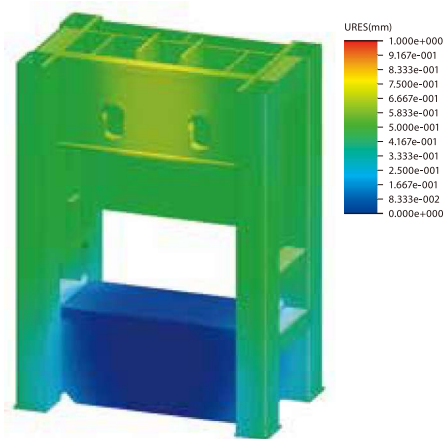
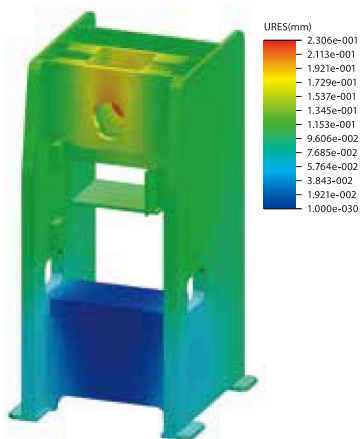
SNS · SLS SERIES

Solid Frame Crank Press · Solid Frame Crank Link Press
Unitized Frame / Monoblock Frame



SNS1 . SLS1 × SNS2 . SLS2

DESIGNED FOR A VARIETY OF STAMPING APPLICATIONS.
EASY SET-UP AND OPERATION.



Excellent Frame Rigidity

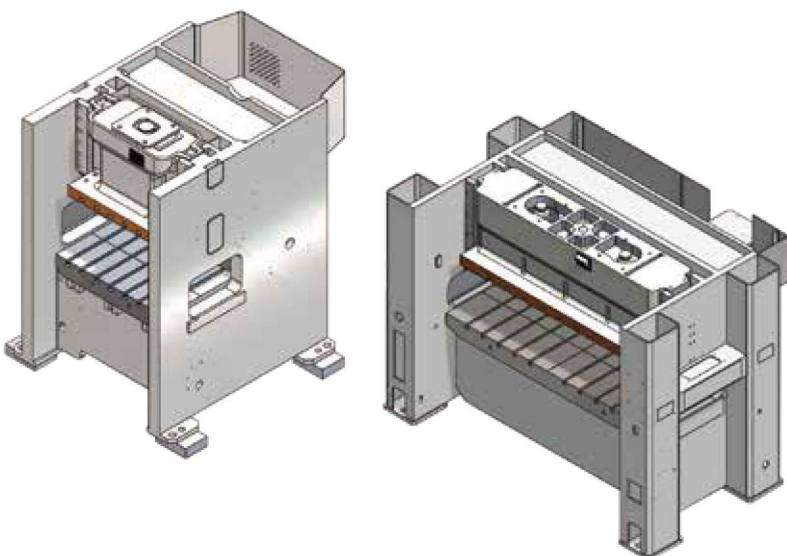
- 3D design, CAE analysis, excellent stiffness.
- Optimized symmetric structure, firmly supported stamping points.
- Minimized stamping noise and vibration.
- Stabilized parts precision and quality.
- Durable dynamic stability, resulting in longer die life.



- Unitized straight side frame, quick to ship, and no angular deflection of gap frame press.
- Good for precision or progressive dies, and longer die life.
- SNS1 · SLS1 from 800kN to 3000kN, SNS2 · SLS2 from 1600kN to 5000kN
- Easy to integrate with peripherals and automation.

Slide and Guides

- Optimized slide structure providing uniform stamping.
- Full-length, centered slide guides to support precision stamping, resistance to unbalanced loads, and long term dynamic press stability.



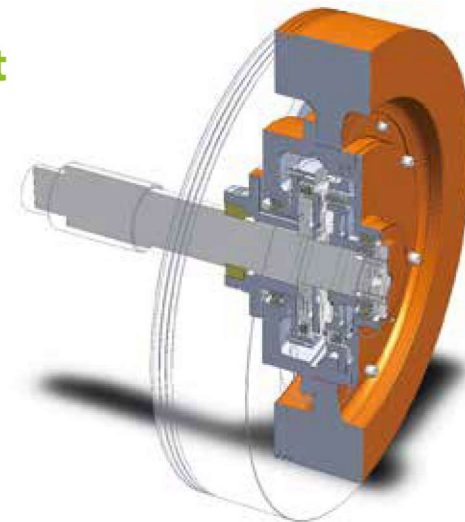
Hydraulic Overload Protector

- Quick response. Fast recovery.
- Proven reliability in die and press protection.



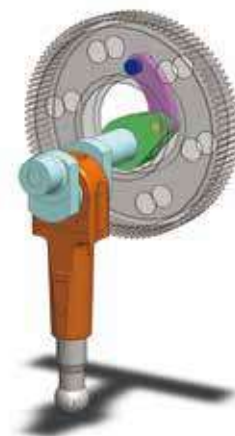
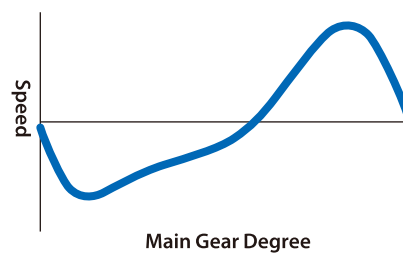
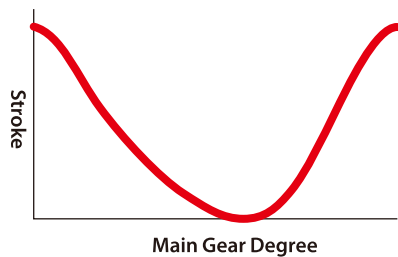
Wet-Type Clutch-and-Brake Unit

- Excellent energy storage, smooth actuation.
- High torque, low wear, quick response, environmentally friendly.
- Efficient power consumption and lubrication.



Link Motion Transmission

- Both of series SLS1 and SLS2 incorporate link motion transmission to let slide slow down during stamping stroke, speed up at off-duty stroke, and gain increased productivity.



Press Control Strength

- Self-developed PPC-9000 control panel, friendly to operate.
- Embedded touchscreen for operation and monitoring.
- Abnormality displayed on monitor for quick troubleshooting.
- Feasible to add more control functions for specific applications.
- Quality components and circuit layout, reliable dual-valves for clutch/brake, branded PLC and sophisticated circuit to control.
- Comprehensive operation monitoring, to monitor crank stopping angle, slide's re-starting criterion in single-stroke mode, component abnormality, and so on.
- Satisfactory safety protection, to support light curtains, diversified safety guards (for gates or fences), CE directives or Type4 modules (Option), and so on.



* The appropriateness of different control systems depends on the business setting.

* To provide convenience for operators, the location of HMI touchscreen may be adjusted based on the height of presses.

Compliance with US-Europe-China safety guideline.

Easy to linked with kinds of ancillary automation equipments for mass production.

Quick Die Change (Option)





SNS1 · SLS1 SERIES

Standard Attachments

- Main Motor with Inverter
 - Automatic Grease Lubrication System
 - Spare Cam - 8 Sets
 - Combination Wet Clutch / Brake
 - Counter Balancer
 - Misfeed Socket - 4 Sets (2A, 2B)
 - Hydraulic Overload Protection
 - Die Height Indicator (Scale Unit: 0.1mm)
 - Air Ejector - 1 Set
 - PPC 9200 Control System
 - SPM and Crank Angle Displays
 - Programmable Cam Switches
 - Air Outlet - 1 Set
 - Touch Panel Display with Press Running / Error Message
 - Portable Operator Stand - 1 Set
 - Maintenance Tool Box
 - Total/Preset/Batch/Maintenance Counter
 - Anti-Repeat Safety Circuit
 - Motorized Slide Adjustment
 - Main Moter FWD/REV Controller
-

Optional Attachments

- Light Curtains
- Die Lamp
- Bottom Dead Center Detector
- Anti Vibration Mounts
- Lamp Socket (1A)
- Quick Die Change System
- Tonnage Indicator
- Pneumatic Die Cushion
- Safety Block
- Adjustable Single Shot Lubrication



SNS2 · SLS2 SERIES

Standard Attachments

- Main Motor with Inverter
 - Counter Balancer
 - Misfeed Socket - 4 Sets (2A, 2B)
 - Combination Wet Clutch / Brake
 - Counter Balancer Manual Oiler
 - Air Ejector - 1 Set
 - Hydraulic Overload Protection
 - Die Height Indicator (Scale Unit: 0.1mm)
 - Air Outlet - 1 Set
 - PPC 9200 Control System
 - SPM and Crank Angle Displays
 - Touch Panel Display with Press Running / Error Message
 - Total/Preset/Batch/Maintenance Counter
 - Programmable Cam Switches
 - Maintenance Tool Box
 - Portable Operator Stand - 1 Set
 - Anti-Repeat Safety Circuit
 - Motorized Slide Adjustment
 - Main Moter FWD/REV Controller
 - Automatic Grease Lubrication System
 - Spare Cam - 8 Sets
-

Optional Attachments

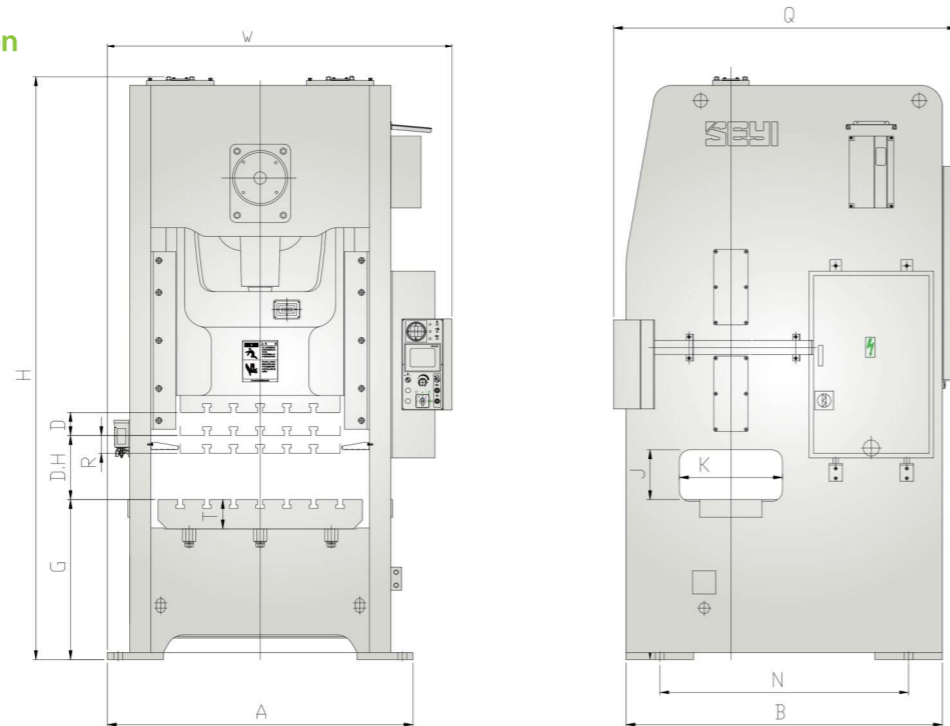
- Light Curtains
- Lamp Socket (1A)
- Knockout Device
- Anti Vibration Mounts
- Booster
- Adjustable Single Shot Lubrication
- Tonnage Indicator
- Flywheel Brake
- Quick Die Change System
- Safety Block
- Pneumatic Die Cushion
- Die Lamp
- Bottom Dead Center Detector



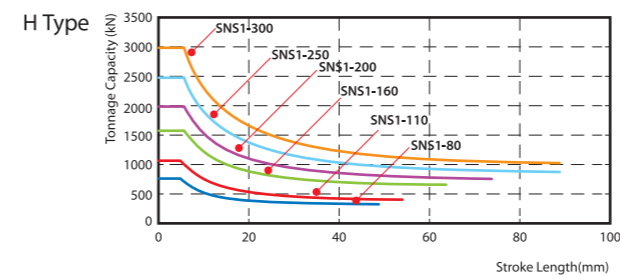
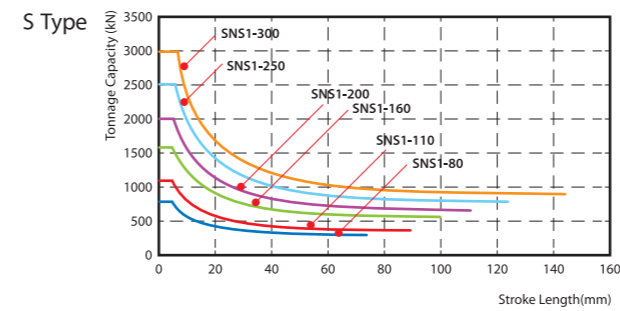
SNS1 · SLS1 SERIES

Model	SNS1-80		SNS1-110		SNS1-160		SNS1-200		SNS1-250		SNS1-300		SLS1-80		SLS1-110		SLS1-160		SLS1-200		SLS1-250		SLS1-300		
	S	H	S	H	S	H	S	H	S	H	S	H	S	H	S	H	S	H	S	H	S	H	S	H	
Tonnage Capacity	800		1100		1600		2000		2500		3000		800		1100		1600		2000		2500		3000		
Stroke Length (l)	150	100	180	110	200	130	220	150	250	180	280	180	100	180	110	200	130	220	150	250	180	280	180	100	
Stroke per Minute	40~75	55~125	35~65	50~110	30~55	40~95	25~45	35~80	22~40	30~60	20~35	25~50	40~75	55~110	35~65	50~100	30~55	40~85	25~45	35~70	22~40	30~60	20~35	25~50	
Tonnage Rating Point	5		5		6		6		6		6		5		5		6		6		6		6		
Die Height (D.H)	330	300	350	320	400	360	450	400	450	400	500	400	330	300	350	320	400	360	450	400	450	400	500	400	
Slide Adjustment (R)	80		90		100		110		120		120		80		90		100		110		120		120		
Slide Area (LRxFB)	700X460		800X520		900X580		1000X650		1100X720		1150X800		700X460		800X520		900X580		1000X650		1100X720		1150X800		
Diameter of Shank Hole	ø50.8		ø50.8		ø65		ø65		ø65		ø65		ø50.8		ø50.8		ø65		ø65		ø65		ø65		
Bolster Area (LRxFB)	900X680	900X460	1000X680	1000X520	1150X760	1150X600	1250X840	1250X680	1350X900	1350X750	1400X1050	1400X850	900X680	900X460	1000X680	1000X520	1150X760	1150X600	1250X840	1250X680	1350X900	1350X750	1400X1050	1400X850	
Bolster Thickness (T)	140		155		165		180		180		200		140		155		165		180		180		200		
Bolster Height (W/O Mounts) (G)	900		900		940		900		1020		1000		900		900		940		900		1020		1000		
Main Motor (Fixed Speed + Inverter)	7.5X4		11X4		15X4		18.5X4		22X4		30X4		7.5X4		11X4		15X4		18.5X4		22X4		30X4		
Slide Adjustment Motor	0.4X4		0.4X4		0.7X4		0.7X4		0.7X4		1.5X4		0.4X4		0.4X4		0.7X4		0.7X4		0.7X4		1.5X4		
Window Opening (KxJ)	440X280	370X250	500X300	420X270	560X350	470X310	620X400	520X350	680X400	570X350	760X450	650X350	440X280	370X250	500X300	420X270	560X350	470X310	620X400	520X350	680X400	570X350	760X450	650X350	
Foot Print (AxB)	1430X1470	1430X1420	1560X1600	1560X1550	1720X1780	1720X1730	1870X1980	1870X1930	1990X2150	1990X2100	2070X2297	2070X2247	1430X1470	1430X1420	1560X1600	1560X1550	1720X1780	1720X1730	1870X1980	1870X1930	1990X2150	1990X2100	2070X2297	2070X2247	
Floor Space Required (WxQ)	1630X1740		1765X1875		1905X2055		2055X2245		2175X2500		2255X2580		1630X1740		1765X1875		1905X2055		2055X2245		2175X2500		2255X2580		
Press Height (W/O Mounts) (H)	2765		3000		3320		3280		3740		3720		2765		3000		3320		3280		3740		3720		
Upper Die Weight	300		350		500		800		1000		1250		300		350		500		800		1000		1250		
Required Air Pressure	0.5		0.5		0.5		0.5		0.5		0.5		0.5		0.5		0.5		0.5		0.5		0.5		
Die Cushion (Option)																									
Capacity	kN	60	—	60	—	80	—	100	—	100	—	140	—	60	—	60	—	80	—	100	—	100	—	140	—
Stroke Length	mm	95	—	95	—	110	—	130	—	130	—	140	—	95	—	95	—	110	—	130	—	130	—	140	—
Die Cushion Area (LRxFB)	mm	480X340	—	480X340	—	560X370	—	700X450	—	700X450	—	700X450	—	480X340	—	480X340	—	560X370	—	700X450	—	700X450	—	700X450	—

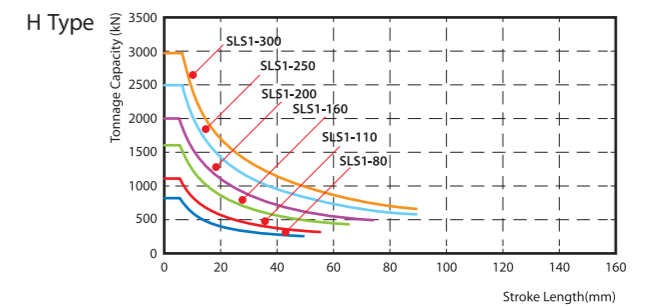
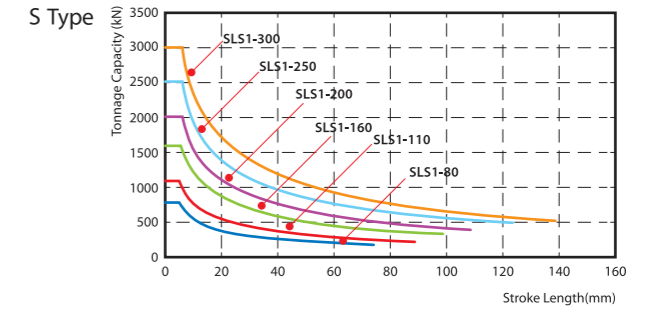
SNS1 · SLS1 Machine Dimension



SNS1 Stroke & Pressure Curve



SLS1 Stroke & Pressure Curve



※ This specification is subject to change without notice.

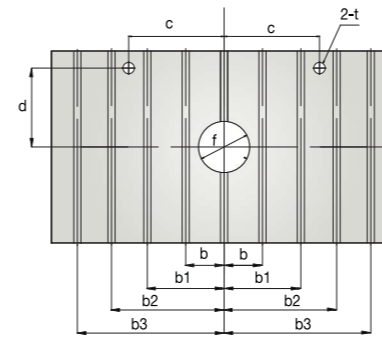
※ Copyright ©2021 All Rights Reserved By SEYI

2021.05

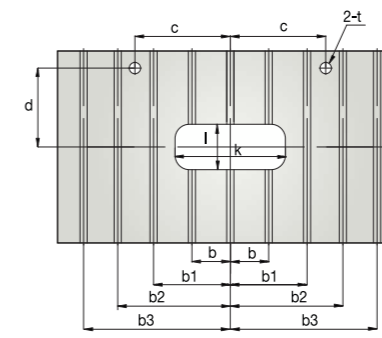


Model	SNS1-80		SNS1-110		SNS1-160		SNS1-200		SNS1-250		SNS1-300	
	SLS1-80		SLS1-110		SLS1-160		SLS1-200		SLS1-250		SLS1-300	
Type	S	H	S	H	S	H	S	H	S	H	S	H
b	150		150		150		150		150		150	
b1	300		300		300		300		300		300	
b2	—		—		450		450		450		450	
b3	—		—		—		—		—		600	
c	200		200		200		200		250		250	
f	ø180		ø200		ø220		ø250		ø270		ø270	
d	315	180	315	220	340	260	380	300	410	335	450	335
g	140		140		150		150		150		150	
h	90		90		100		100		100		100	
i(LRXFB)	4X4		4X4		4X4		4X5		4X5		4X5	
j	ø32		ø32		ø32		ø32		ø32		ø32	
k	360		400		440		480		540		540	
l	180		200		220		240		270		270	
n	28		28		28		28		28		28	
p	30		30		30		30		30		30	
q	20		20		20		20		20		20	
s	48		48		48		48		48		48	
t	ø30		ø30		ø30		ø30		ø30		ø30	
u	75		75		75		75		75		75	
v	45		45		50		100		100		100	
w	ø40 h7		ø70 h7		ø70 h7		ø70 h7		ø70 h7		ø70 h7	

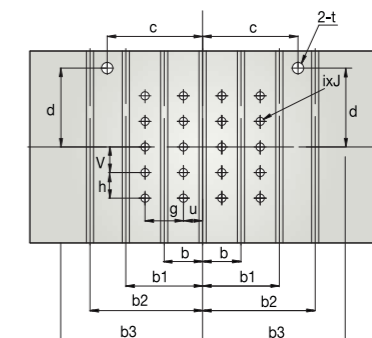
Surface of Bolster-Round Type (Standard)



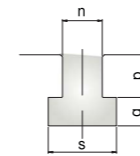
Surface of Bolster-Rectangular Type



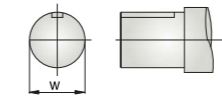
Surface of Bolster-Die Cushion



Size of T-Slot

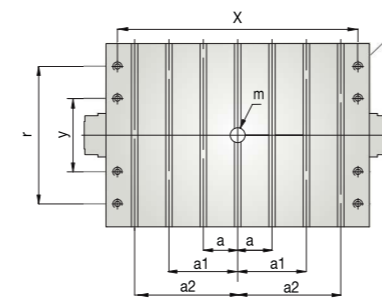


Surface of Take-Off Shaft (Option)

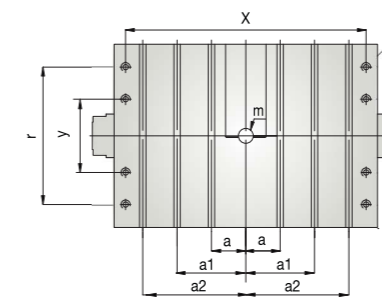


Model	SNS1-80		SNS1-110		SNS1-160		SNS1-200		SNS1-250		SNS1-300	
	SLS1-80		SLS1-110		SLS1-160		SLS1-200		SLS1-250		SLS1-300	
Type	S	H	S	H	S	H	S	H	S	H	S	H
a	150		150		150		150		150		150	
a1	240		300		300		300		300		300	
a2	—		—		—		—		440		450	
m	ø50.8		ø50.8		ø65		ø65		ø65		ø65	
n	28		28		28		28		28		28	
p	30		30		30		30		30		30	
q	20		20		20		20		20		20	
s	48		48		48		48		48		48	
x	600		700		800		900		1000		1050	
r	360		420		480		550		600		600	
y	240		260		280		280		320		320	
z	8-ø18		8-ø23		8-ø23		8-ø23		8-ø23		8-ø23	

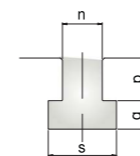
Without Shank Holder



With Shank Holder



Size of T-Slot



Area of Slide

(SNS1/SLS1-80, 110 With Shank Holder, 160~300 Without Shank Holder)

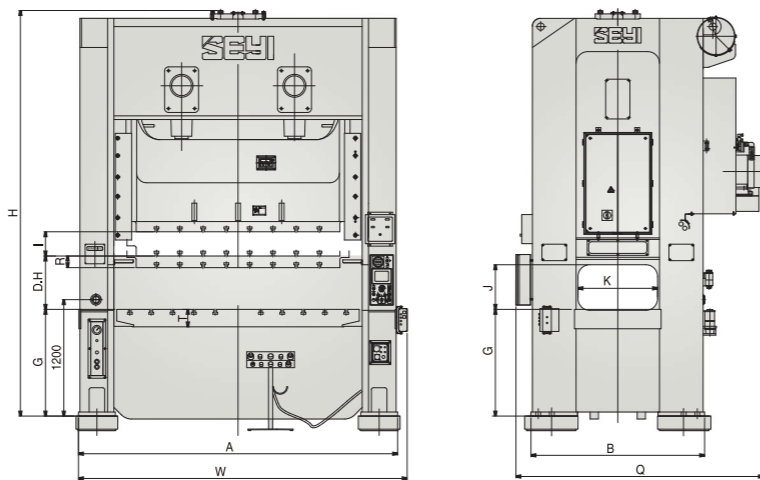
※ This specification is subject to change without notice.

※ Copyright © 2021 All Rights Reserved By SEYI

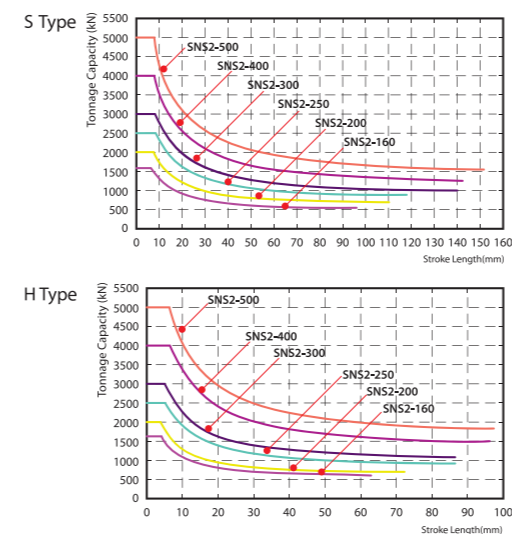
SNS2 · SLS2 SERIES

Model	SNS2-160		SNS2-200		SNS2-250		SNS2-300		SNS2-400		SNS2-500		SLS2-160		SLS2-200		SLS2-250		SLS2-300		SLS2-400		SLS2-500		
Type	S	H	S	H	S	H	S	H	S	H	S	H	S	H	S	H	S	H	S	H	S	H	S	H	
Tonnage Capacity	1600		2000		2500		3000		4000		5000		1600		2000		2500		3000		4000		5000		
Stroke Length (l)	200	130	230	150	250	180	280	180	300	200	300	200	200	130	230	150	250	150	280	150	300	200	300	200	
Stroke per Minute	30-55	40-85	25-45	35-70	22-40	30-60	20-40	25-50	20-40	25-50	20-40	25-50	30-55	40-85	25-45	35-70	22-40	30-55	20-35	25-45	15-30	25-40	15-30	25-40	
Tonnage Rating Point	6	4	7	4	7	5	7	5	7	6	7	6	6	5	7	5	7	6	7	7	7	7	7	7	
Die Height (D.H)	450	400	500	450	550	450	550	450	600	450	600	450	450	400	500	450	550	450	550	450	600	450	600	450	
Slide Adjustment (R)	100		100		120		120		120		120		100		100		120		120		120		120		
Slide Area (LRxFB)	1560X650		1850X750		1	2200X820	1	2200X900	1	2200X1000	1	2200X1100	1560X650		1850X750		1	2200X820	1	2200X900	1	2200X1000	1	2200X1100	
Diameter of Shank Hole	ø51X3		ø51X3		ø51X3		ø51X3		ø51X3		ø51X3		ø51X3		ø51X3		ø51X3		ø51X3		ø51X3		ø51X3		
Bolster Area (LRxFB)	1850X760		2200X840		1	2500X920	1	2500X1000	1	2500X1100	1	2500X1200	1850X760		2200X840		1	2500X920	1	2500X1000	1	2500X1100	1	2500X1200	
Bolster Thickness (T)	160		170		180		200		200		200		160		170		180		200		200		200		
Bolster Height (W/O Mounts) (G)	950		1000		1	1100	1,2	1150	1250		1250		950		1000		1	1100	1,2	1150	1250		1250		
Main Motor (Fixed Speed + Inverter)	15X4		18.5X4		22X4		30X4		37X4		45X4		15X4		18.5X4		22X4		30X4		37X4		45X4		
Slide Adjustment Motor	1.5X4		1.5X4		1.5X4		1.5X4		1.5X4		1.5X4		1.5X4		1.5X4		1.5X4		1.5X4		1.5X4		1.5X4		
Window Opening (K)	660		740		820		900		1000		1100		660		740		820		900		1000		1100		
Window Opening (J)	400	320	450	350	460	350	500	350	550	400	550	400	400	320	450	350	460	350	500	350	550	400	550	400	
Foot Print (AxB)	2600X1430		2930X1650		1	3290X1790	1	3390X1870	1	3410X2070	1	3670X2170	2600X1560		2930X1650		1	3290X1850	1	3390X1930	1	3410X2070	1	3670X2170	
Required Floor Space (WxQ)	2705X2345		3045X2490		1	3390X2555	1	3490X2665	1	3545X2955	1	3800X3210	2675X2405		3005X2495		1	3365X2695	1	3490X2780	1	3485X3160	1	3745X3265	
Press Height (W/O Mounts) (H)	3510	3450	3885	3830	1	4180	1,2	4505	1,2	4820	1,2	5020	1,2	3700	3640	4025	3965	1	4285	1,2	4505	1,2	4910	1,2	5105
Upper Die Weight	1400		2000		1	2200	1,2	2800	1,2	3000	1,2	3200	1400		2000		1	2200	1,2	2800	1,2	3000	1,2	3200	
Required Air Pressure	0.6		0.6		0.6		0.6		0.6		0.6		0.6		0.6		0.6		0.6		0.6		0.6		
Die Cushion (Option)																									
Capacity	kN	80X2	—	100X2	—	140X2	—	140X2	—	140X2	—	140X2	—	80X2	—	100X2	—	140X2	—	140X2	—	140X2	—	140X2	—
Stroke Length	mm	110	—	130	—	140	—	140	—	140	—	140	—	110	—	130	—	140	—	140	—	140	—	140	—
Die Cushion Area (LRxFB)	mm	560X370X2		700X450X2		700X450X2		700X450X2		700X450X2		700X450X2		560X370X2		700X450X2		700X450X2		700X450X2		700X450X2		700X450X2	

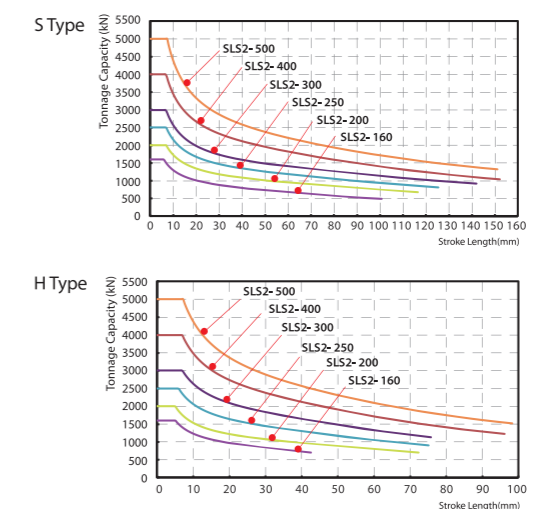
SNS2 · SLS2 Machine Dimension



SNS2 Stroke & Pressure Curve



SLS2 Stroke & Pressure Curve

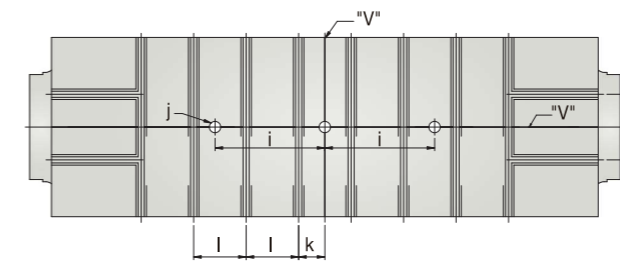


※ This specification is subject to change without notice.
 ※ Copyright © 2021 All Rights Reserved By SEYI
 2021.05

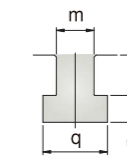
Model	SNS2-160		SNS2-200		SNS2-250		SNS2-300		SNS2-400		SNS2-500	
	SLS2-160	SLS2-200	SLS2-250	SLS2-300	SLS2-400	SLS2-500	S	H	S	H	S	H
Type	S	H	S	H	S	H	S	H	S	H	S	H
a	200		215		235		235		235		235	
b	200		220		220		220		220		220	
c	150		160		180		1,2	180	1,2	180	1,2	180
							3,4	400	3,4	400	3,4	400
d	100		110		110		110		110		110	
e	100		100		100		100		100		100	
f(LRXFB)	6X4X2		7X5X2		7X5X2		7X5X2		7X5X2		7X5X2	
g	ø32		ø32		ø32		ø32		ø32		ø32	
h	400		490		510		1,2	510	1,2	510	1,2	510
							3,4	730	3,4	730	3,4	730
i	400		450		450		1,2	450	1,2	582	1,2	679
							3,4	900	3,4	900	3,4	
j	ø51 H7		ø51 H7		ø51 H7		ø51 H7		ø51 H7		ø51 H7	
k	200		110		120		120		120		120	
l	200		220		240		240		240		240	
m	28		28		28		28		28		28	
n	30		30		30		30		30		30	
p	20		20		20		20		20		20	
q	48		48		48		48		48		48	
w1	125		140		150		150		150		150	

SNS2/SLS2 Dimensions of slide & bolster

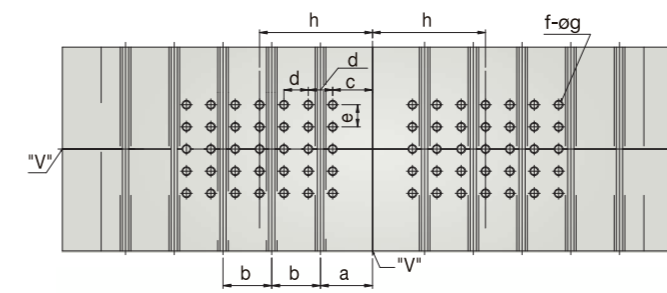
Surface of Slide



Size of T-Slot



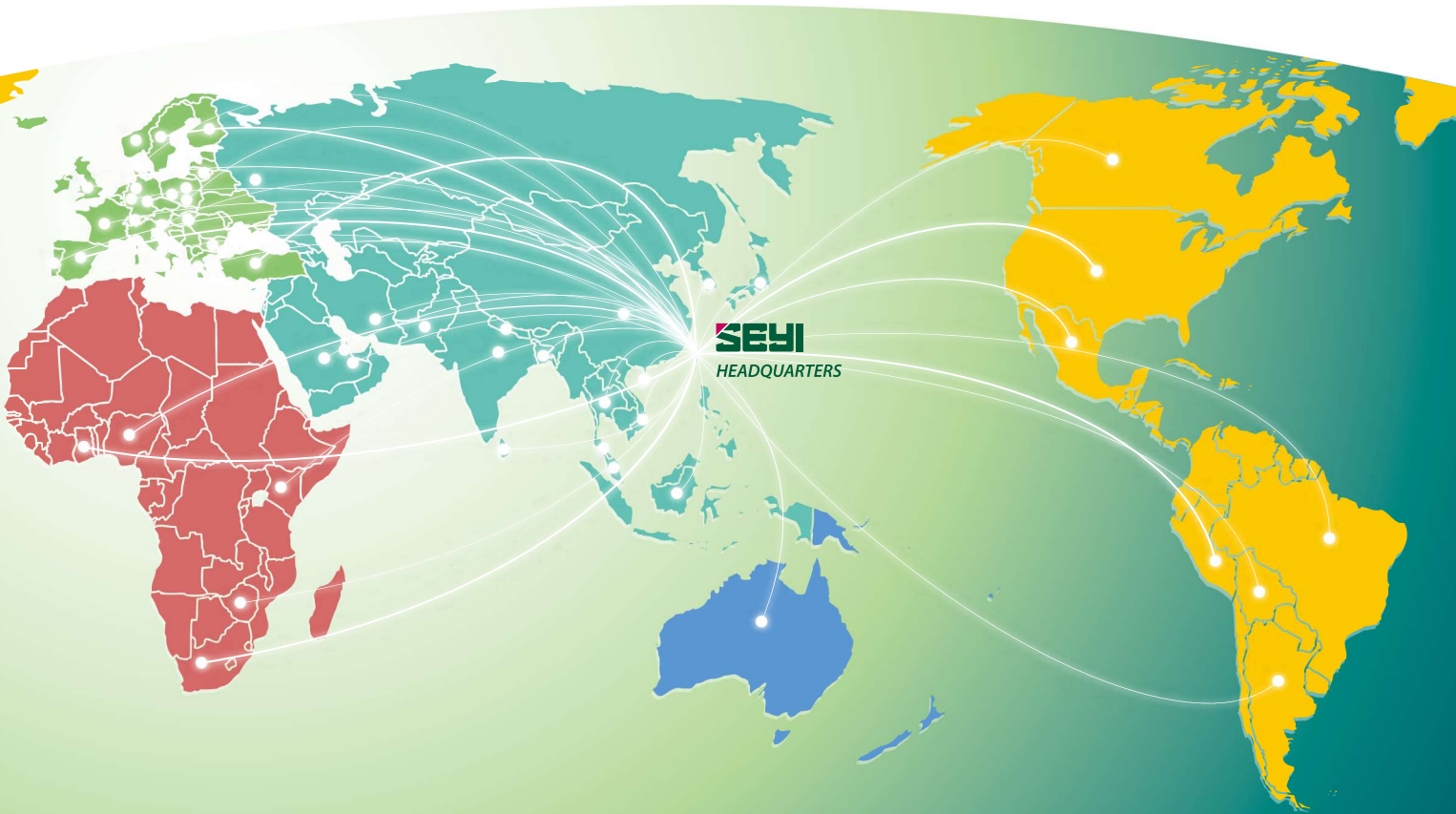
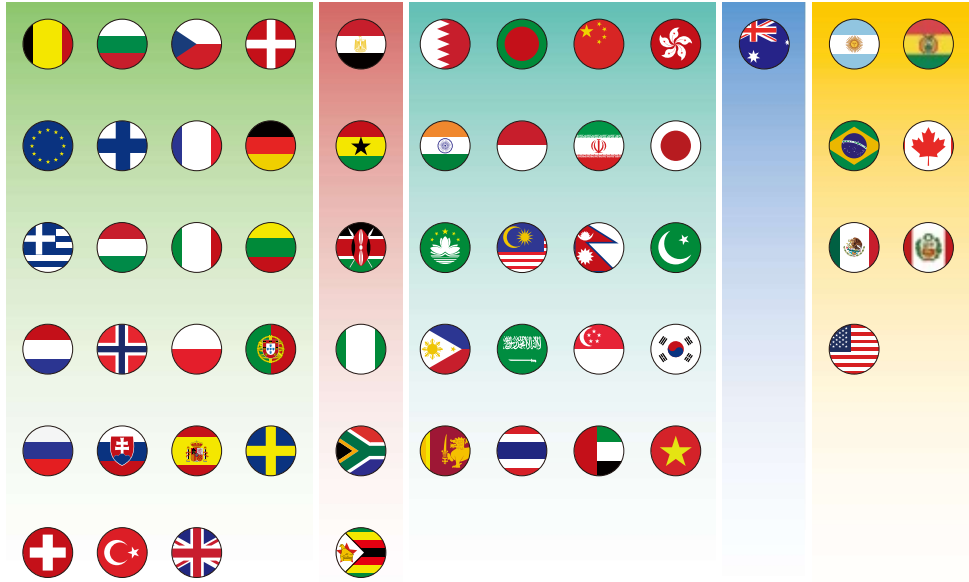
Surface of Bolster



※ This specification is subject to change without notice.

※ Copyright © 2021 All Rights Reserved By SEYI

GLOBAL SERVICE LOCAL SUPPORT





SHIEH YIH MACHINERY INDUSTRY CO., LTD. (HEADQUARTERS)

XIE YI TECH MACHINERY (CHINA) CO., LTD.

SEYI-AMERICA, INC.

SEYI México

SEYI PRESSES EUROPE GmbH

SEYI (Thailand) CO., LTD.

www.seyi.com

